

Tempe Transportation Plan 2050

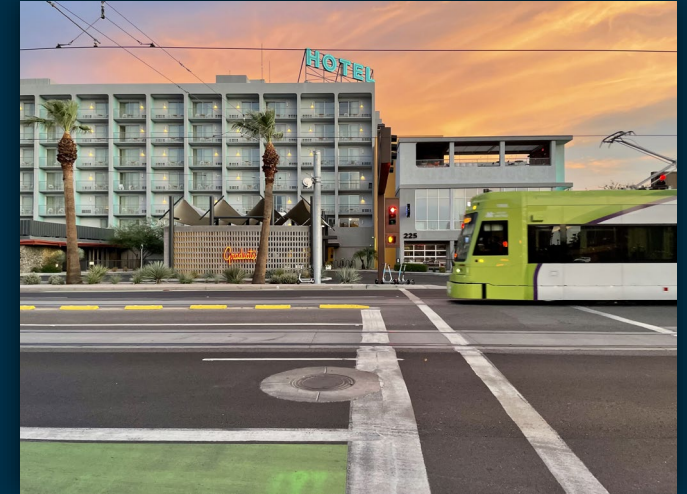
Virtual Public Meeting #1

August 13, 2025



How Far We've Come

- Opened Tempe Streetcar – first modern streetcar in the region
- Launched Orbit Saturn, the first Orbit route to extend into South Tempe
- Completed the transition to 100% alternatively-fueled transit bus fleet
- Added over 47 miles of bike lanes



Strategic Priorities & Performance Measures



- 3.26 – 20 Minute City
- 3.14 – ADA Transition Plan
- 3.27 – Traffic Delay Reduction
- 4.23 – Urban Cooling
- 3.29 – Transit System Satisfaction
- 1.08 - High Severity Traffic Crashes



Project Team

Lindsay Post – Project Manager, Senior Transportation Planner

Alex Phillips – Transportation Planner

Core Working Group (CWG) – Traffic & Safety, Transit, Neighborhood Services, Communications and Marketing, Engineering, Transportation Planning

Technical Advisory Group (TAG) – Parks, CHHS, Housing, Public Works, Community Development, Public Safety, Streets

HDR – Consulting Partner Firm

Scope of Work

We are here!

Phase I – Understanding

Project Management

Public Involvement*

Existing and Future Conditions

- Existing Conditions Assessment

- Safety Analysis (compliant with Vision Zero)

- Future Conditions Assessment

- Literature Review

Phase II- Gaps and Needs

Multimodal Transportation Gaps and Needs Assessment

- Traffic • Safety • Transit
- Active Transportation (walking, cycling, scootering, etc.)

Phase III- Recommendations

Project Recommendations and Prioritization

Draft and Final Plan

Project Deliverables

- ❑ Project Prioritization and Evaluation Matrix
- ❑ A Draft Plan for public review and comment
- ❑ Final Plan
- ❑ 5-Year update to Vision Zero safety plan
- ❑ The project webpage will serve as an 'Executive Summary' for the Plan

Project Timeline

PHASE 1

Understanding

March 2025 - September 2025

Public Meeting #1 August 13, 2025

- Outreach focused on presenting and receiving general feedback about current conditions and future needs.
- Public Survey

PHASE 2

Needs and Gaps

September 2025 - March 2026

Public Meeting #2 Anticipated February 2026

- Outreach focused on receiving feedback on the identified gaps and needs in the system
- Public Survey

PHASE 3

Project Recommendations and Prioritization

March 2026 - June/July 2026

- Outreach focused on presenting draft plan and receiving feedback
- Committee/Council Presentations
- Online feedback forms

What is a Transportation Plan?



- A strategic document that outlines how people and goods will move in the City
- Tempe's roadmap for developing and managing the City's roads, public transit, bicycle, and pedestrian systems





Elements of the Plan

- Goal setting
- Data collection
- Analysis and modeling
- Needs and gaps
- Recommendations
- Action plan
- Vision Zero*

Tempe's Transportation System
Consists of:





13 Arterial bus routes



6 Orbit routes & FLASH



2 Express bus routes



6 miles of light rail with 9 stations



Streetcar



Paratransit and RideChoice



190 miles of bike lanes

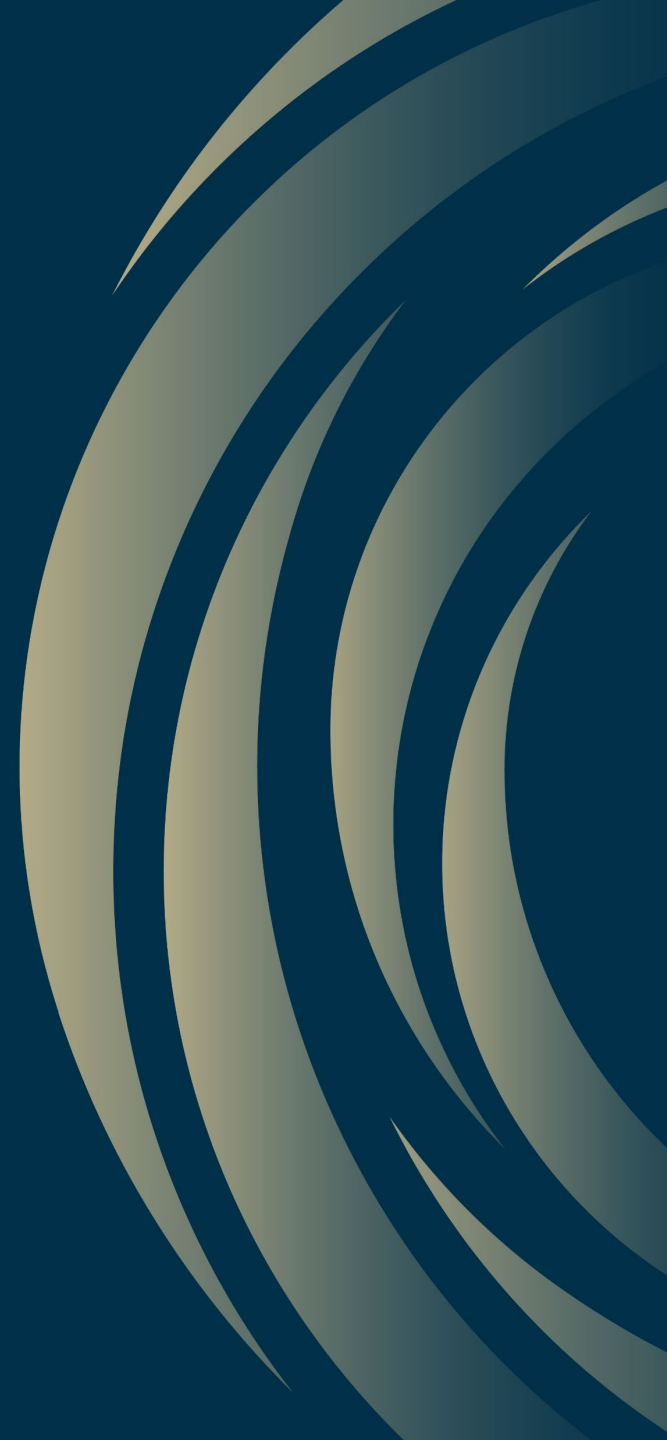


42 miles of multi-use paths



532 Centerline Miles

Why Update the Plan?



The Plan is updated to

Align to Tempe's General Plan 2050 vision and goals

Position the City to pursue regional, state and federal funding



The Plan is updated to

Adjust to shifting travel trends

Keep up with current and future needs, demographic shifts, and changes in technology

Population (Percent Change 2024-50)



The Plan is Updated to

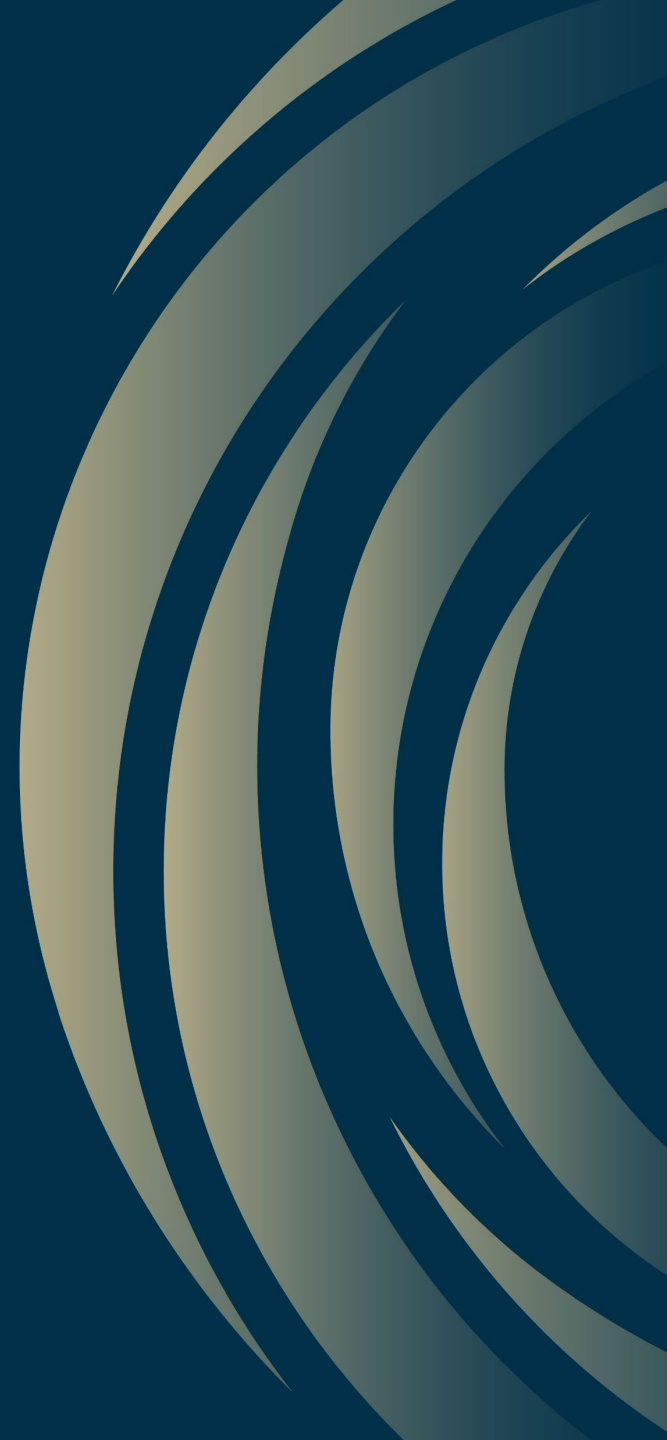
Reflect changes and needs in system and emerging trends

Prioritize investments to serve the community, align with community goals, and take advantage of available funding opportunities



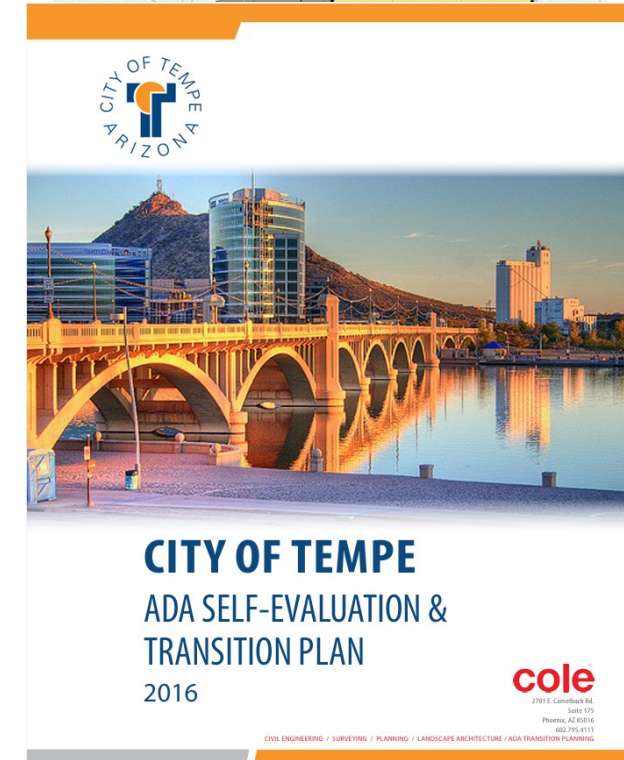
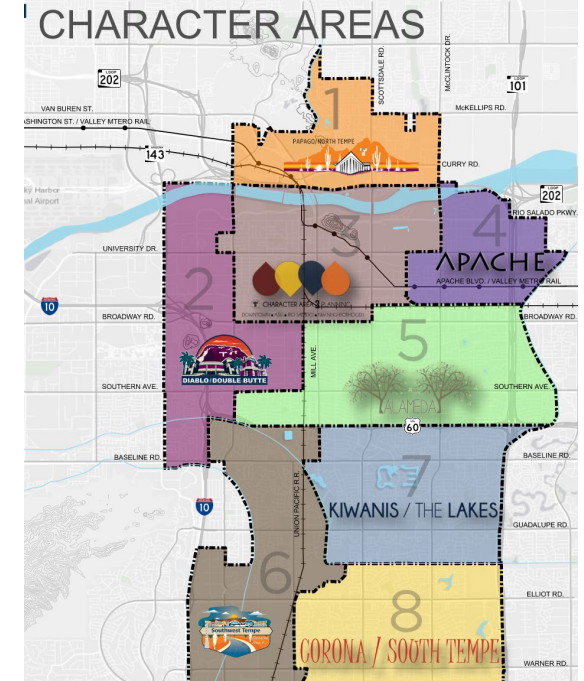
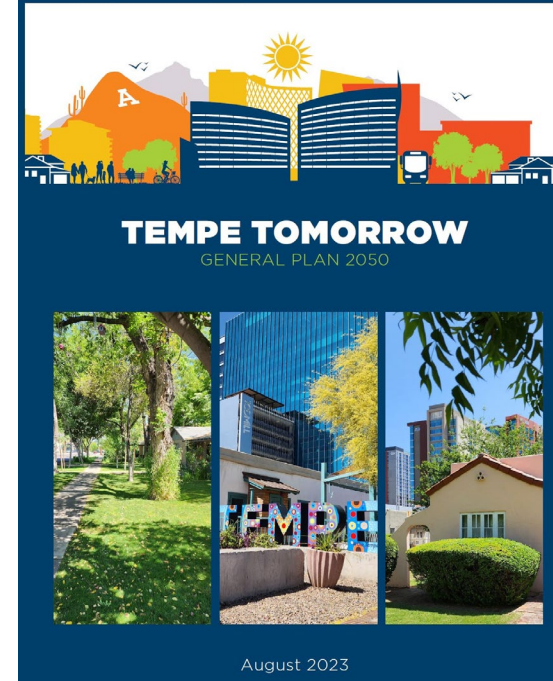
Tempe Streetcar

What Guides the Plan?



What Guides the Plan?

- General Plan Vision with Direction from City Council
- Comprehensive Plans such as the ADA Transition Plan, Character Area Plans, Parks and Recreation Master Plan
- The Public and Stakeholders
- The Transportation Commission

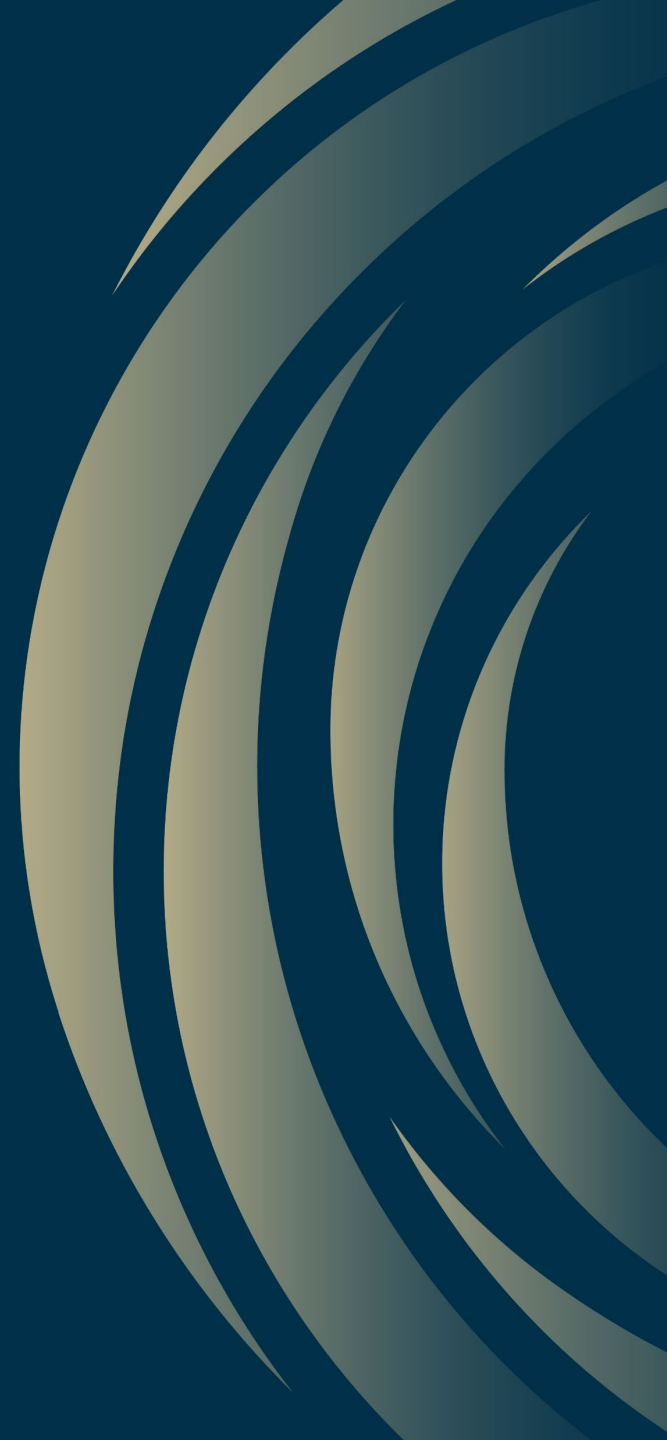


What Guides the Plan?

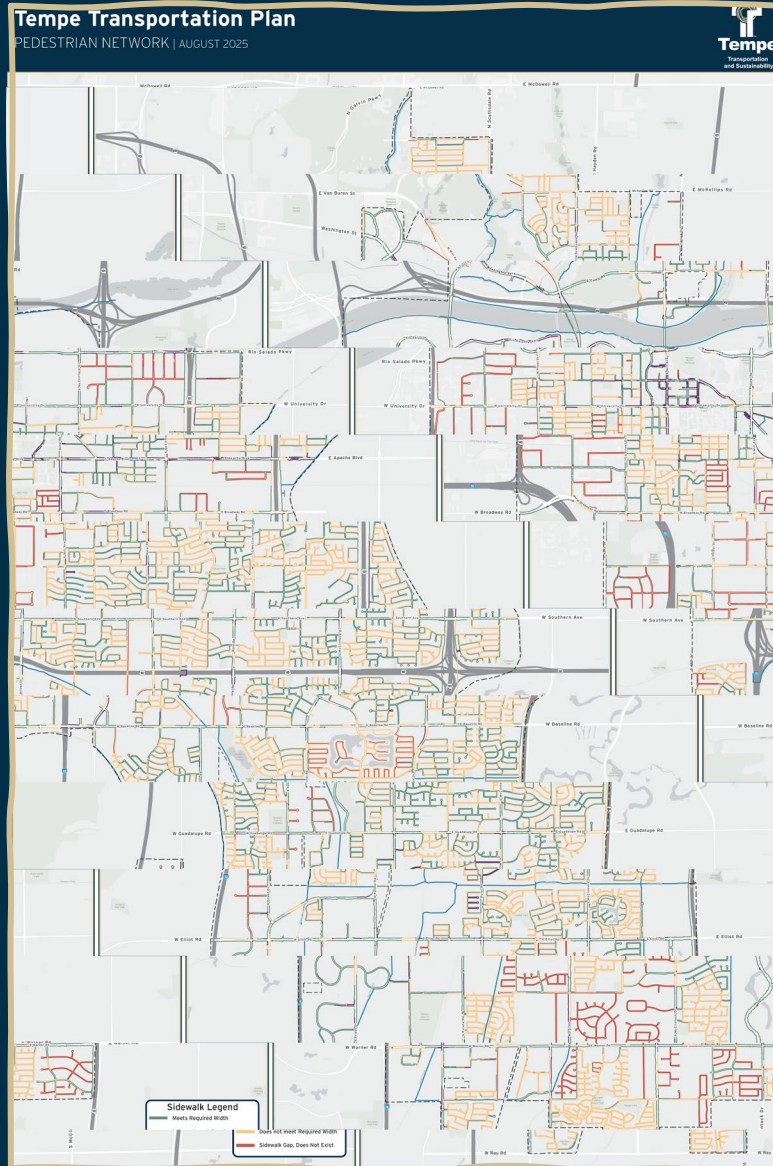
- Advocacy groups
- Projections for future demand
- Growth and development
- Safety and Vision Zero Tempe



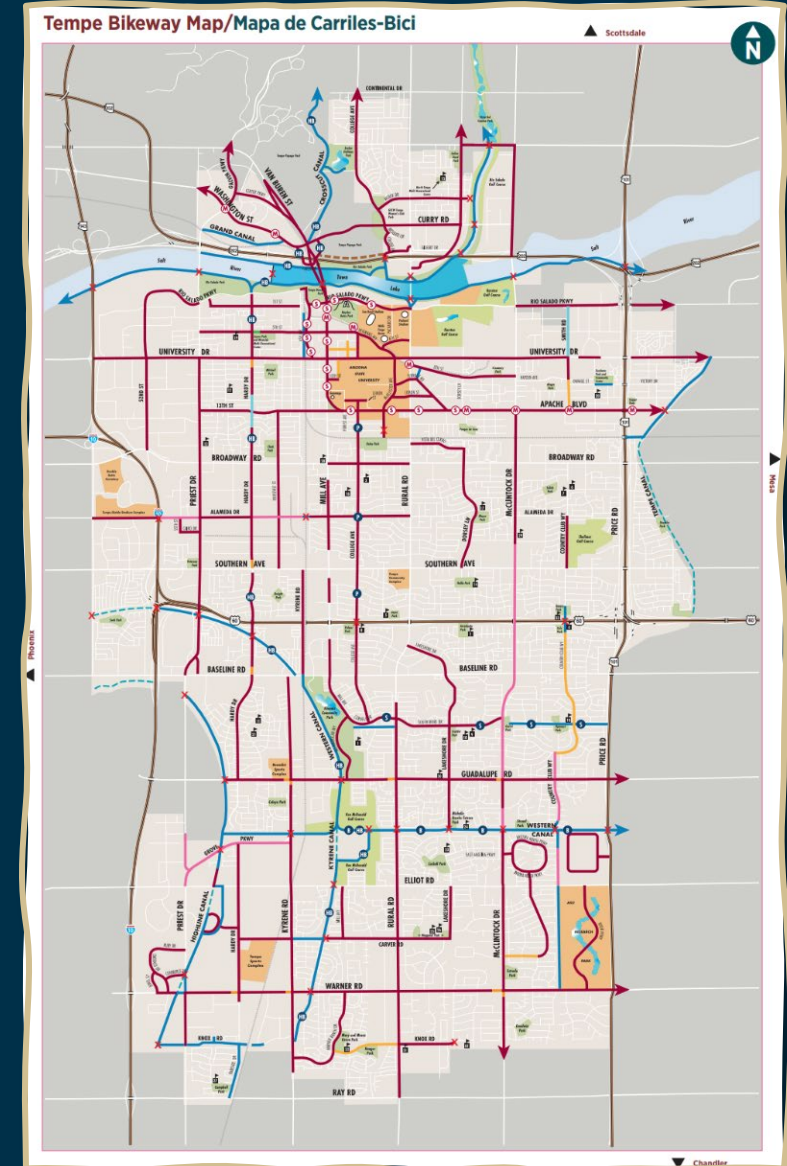
Public Meeting Display Boards



Active Transportation – Bike and Pedestrian

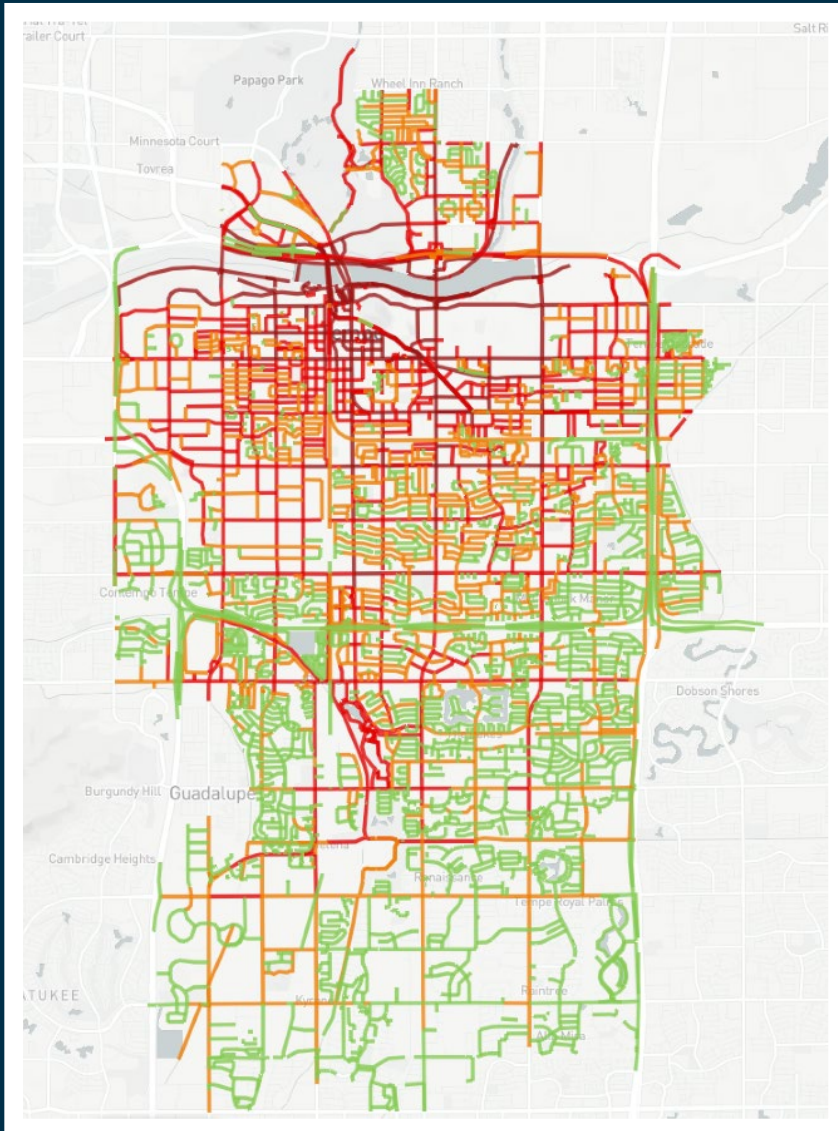


► **Pedestrian Network:**
Sidewalk Facilities



► **Bikeway Map:**
Bike Facilities

Active Transportation – Dockless Scooters



In 2019, City Council established compliance measures for SATVs within the City's rights-of-way to address:

- **operations and safety**
- **parking and staging**
- **data sharing**

To address community concerns downtown, corral zones (staging areas) were established in 2023.

Scooter Stats



**864,464 miles ridden –
a 4% increase over prior year**



**Average distance traveled -
1.61 miles**



**Average duration of a trip -
16.5 min**

*Usage numbers for year ending June 2025



Transit Shelters | *Sustainable features include:*

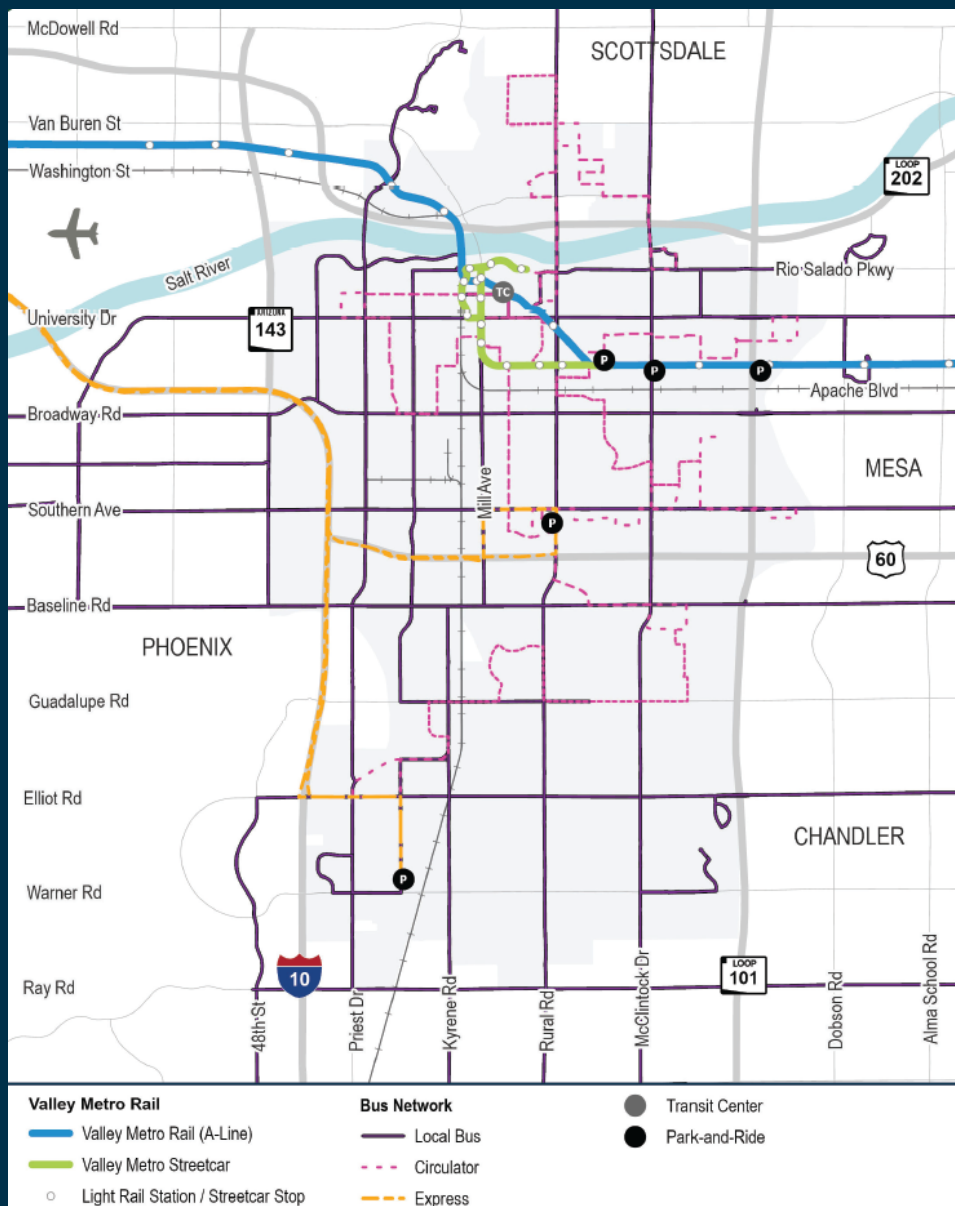
- Solar power
- Local materials and fabrication where possible
- Modular design
- Interchangeable parts for inventory control and reuse
- Durability
- Flexibility
- Recyclability
- Ease of assembly
- Life cycle

The criteria for prioritizing shelter placement includes:

- *Transit ridership*
- *Heat vulnerability,*
- *Likelihood to use transit*
- *zero car households, poverty, racial and ethnic minority groups, employment, and disabled population by census tract.*



Transit



Mode	Weekday		
	Service Span	Peak	Off-Peak
Light Rail	3:30 am - 2:00 am	12	12-20
Tempe Streetcar	5:30 am - 12:30 am	15	15-20
Local Bus	5:00 am - 11:00 pm	15-30	30
Neighborhood Circulator	6:00 am - 10:30 pm	15	15
Express	4 inbound AM peak trips, 4 outbound PM peak trips		

Mode	Saturday			Sunday		
	Service Span	Peak	Off-Peak	Service Span	Peak	Off-Peak
Light Rail	3:30 am - 2:15 am	15	15-20	3:45 am - 2:10 am	20	20
Tempe Streetcar	5:30 am - 12:30 am	15	15-20	7:30 am - 11:00 pm	20	20
Local Bus	5:00 am - 11:00 pm	30	30	5:00 am - 11:30 pm	30	30
Neighborhood Circulator	8:00 am - 10:30 pm	15	15	8:00 am - 7:00 pm	30	30
Express	No Service	-	-	No Service	-	-

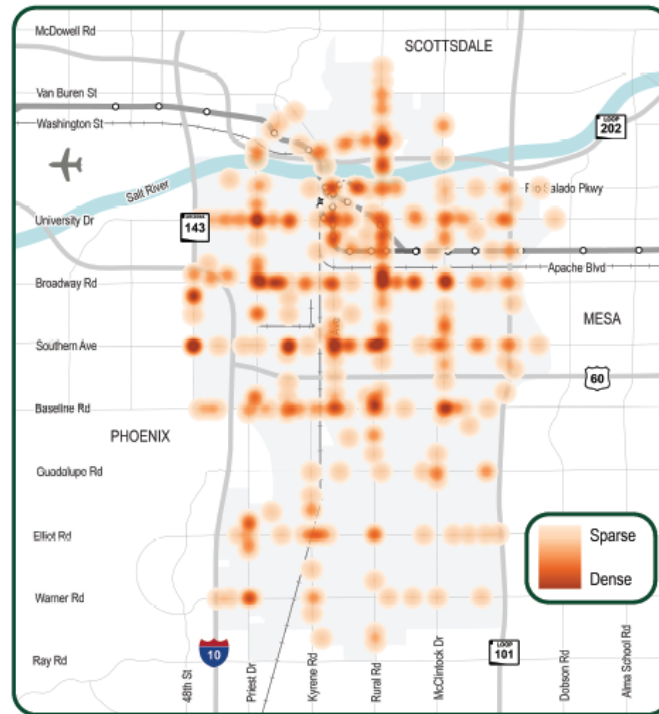
Where are crashes happening in Tempe?

A crash heatmap uses color gradients to show the frequency of accidents across the City.

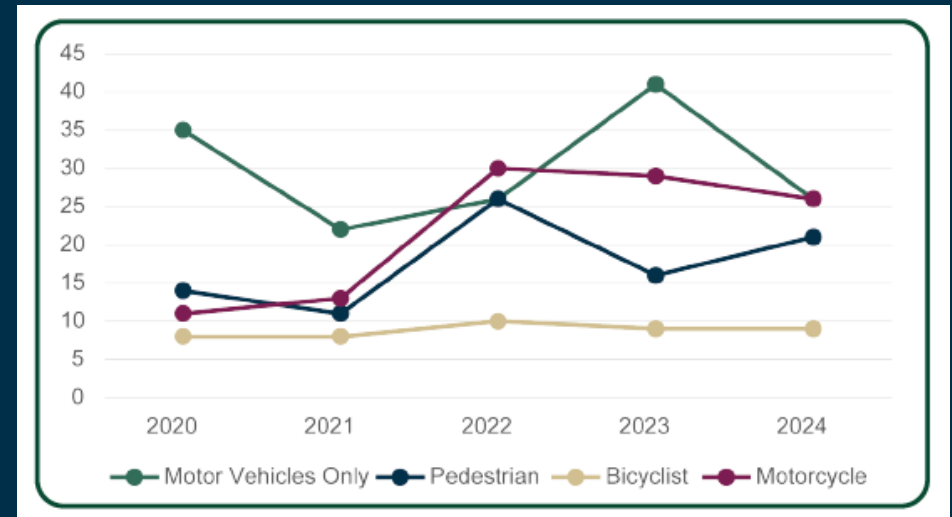
Studying high-crash locations can lead to solutions that make streets safer for everyone.



The goal of Tempe's Vision Zero Plan is to reduce the number of fatal and serious injury crashes in Tempe.



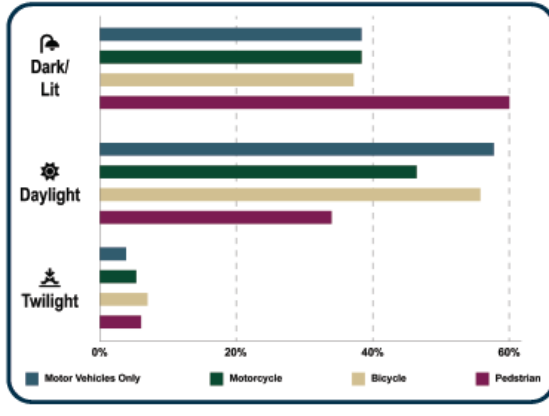
Crash Heat Map (all modes)



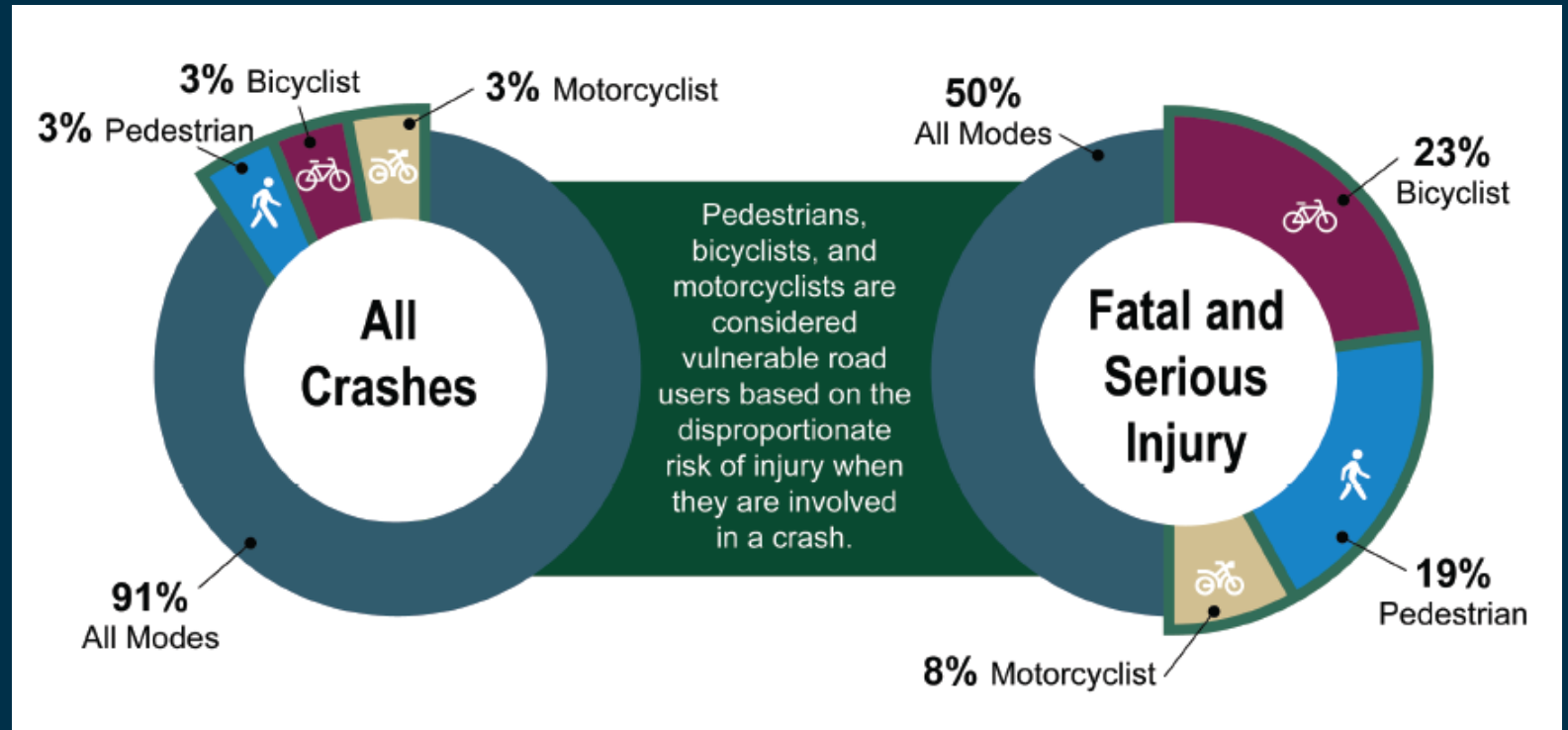
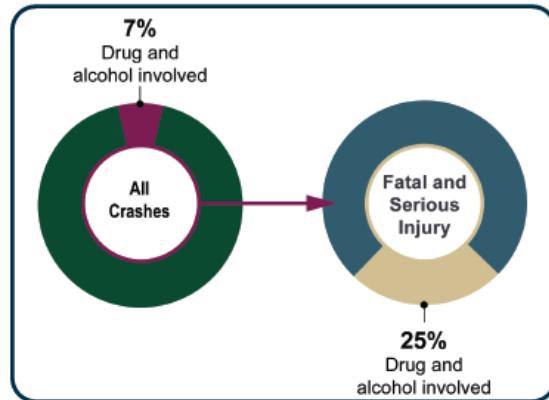
Information shown reflects crashes for the five-year period ending June 30, 2024

Crash Data

What time of day are crashes occurring?



Fatal and Serious Injury



What is Tempe Working on Now?

Capital Improvement Program (CIP) 2025-2030

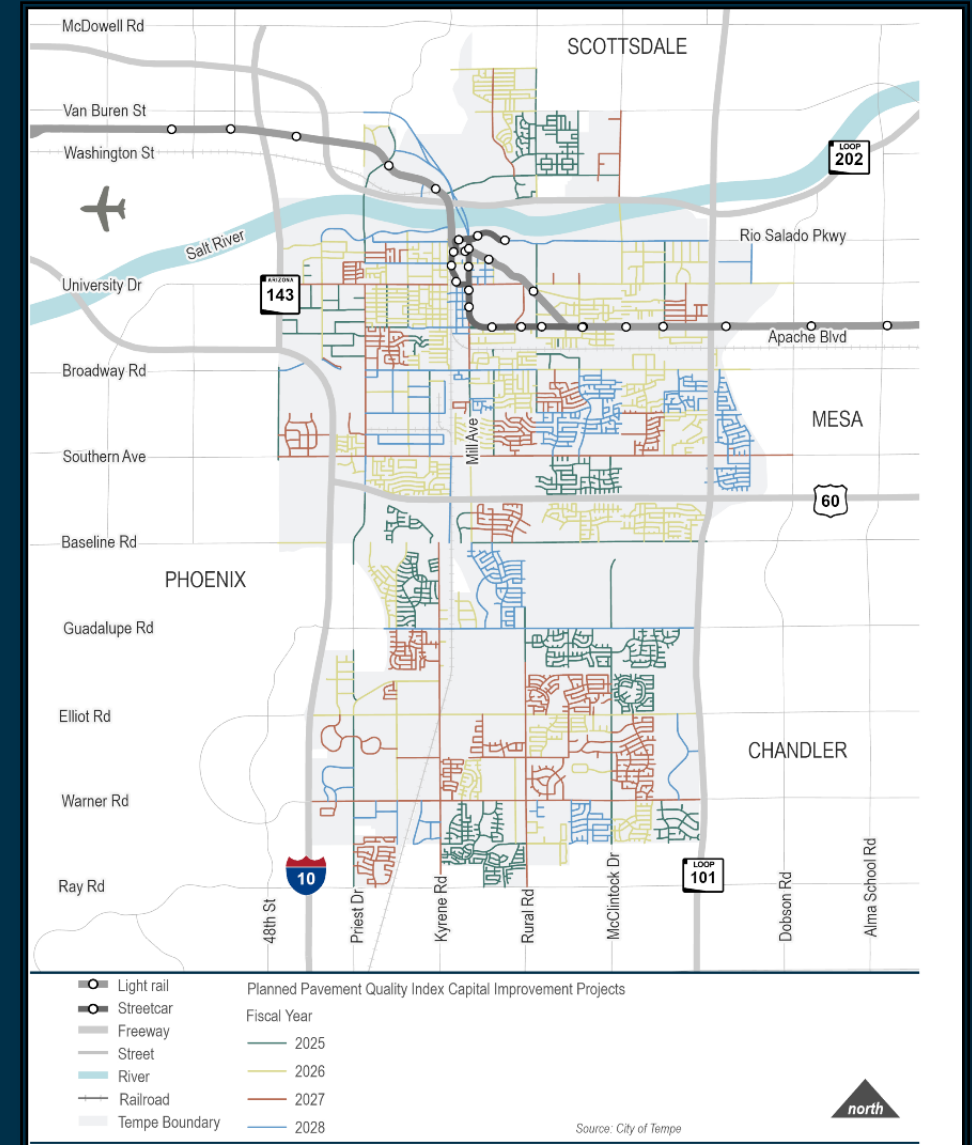
- 15 Transit and Bike/Ped Projects ≈ \$145M
- 14 Traffic Signals and Lighting Projects ≈ \$20M
- 30 Transportation and ROW Projects ≈ \$296M

Pavement Quality Index Acceleration Program

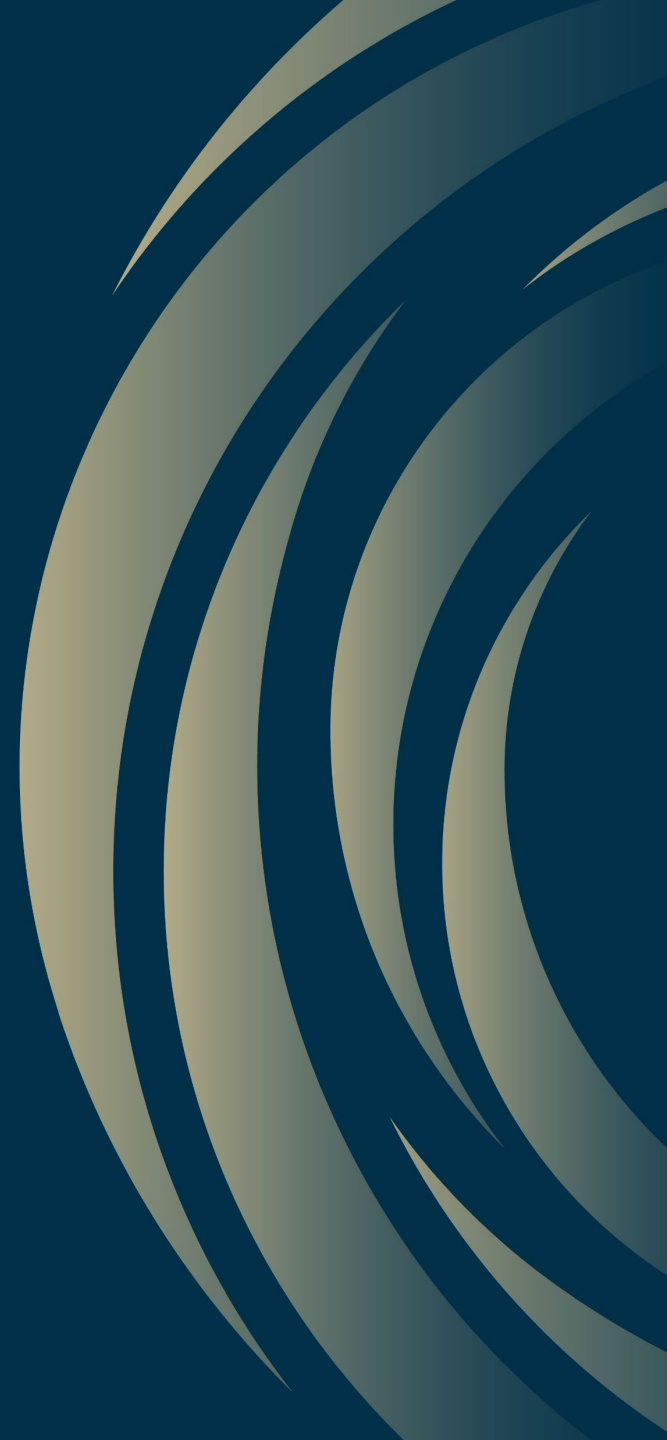
Tempe Voter-Approved Bond Measure to Accelerate Tempe Street Improvements

Improvements May Include:

- **Street Signage**
- **Bike Lanes**
- **Sidewalk Improvements**
- **Greater ADA Accessibility**



How Can I Stay Involved?



Project Website

- Acts as Existing Conditions Report and Interactive Public Feedback Tool
- To Be Updated for Each Phase
- www.tempe.gov/transportationplan2050
- transportationplan2050.tempe.gov





Help Shape Tempe's Transportation Future

- Scan the QR code to visit Tempe Transportation Plan 2050 Website or go to www.tempe.gov/transportationplan2050
- Complete the Survey and enter for your chance to win two movie passes or a \$30 Valley Metro Copper Card
- Check back to the website periodically to learn what's going on

Contact Info

transportationplan@tempe.gov
480-858-2348

Share Your Thoughts

Surveys available here on tablet or paper
Survey open Aug. 13 – Sept. 3



tempe.gov/transportationplan2050